

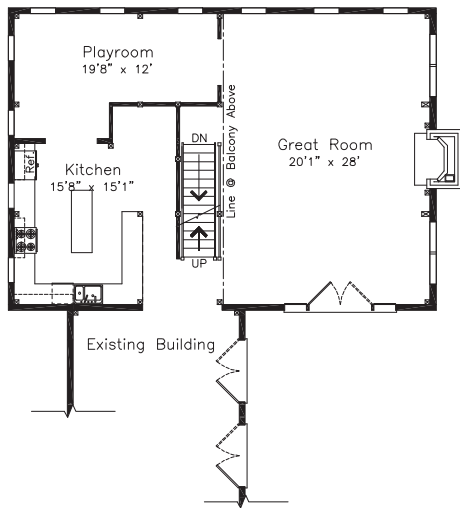


THE MONT VERNON

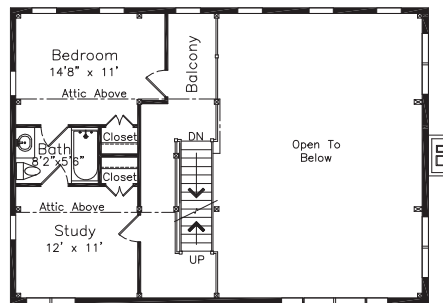


ADDITION SQUARE FOOTAGE: 3035*
 BEDROOMS: 2*
 BATHS: 1*

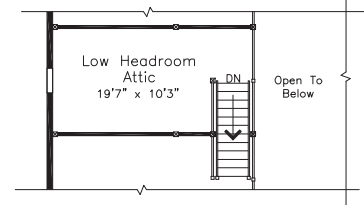
FIRST FLOOR



SECOND FLOOR



ATTIC

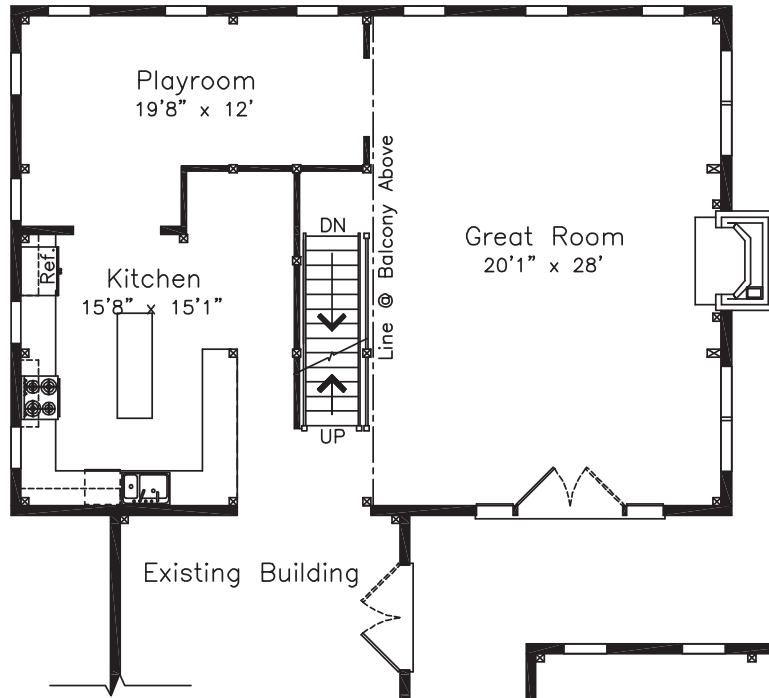


*These figures pertain to the barn addition only.

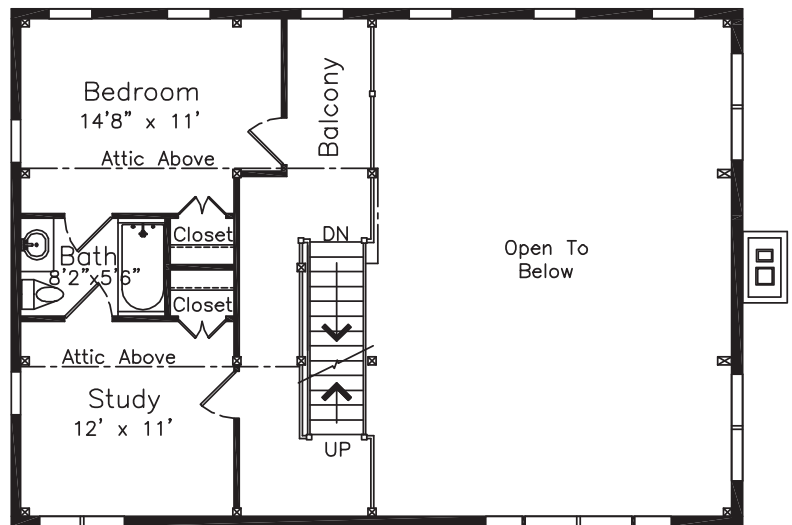
©2010 Yankee Barn Homes. All rights reserved.

THE MONT VERNON

FIRST FLOOR



SECOND FLOOR



ATTIC

